

CENTRIFUGAL FANS (AEBC)



Airochem Engineering

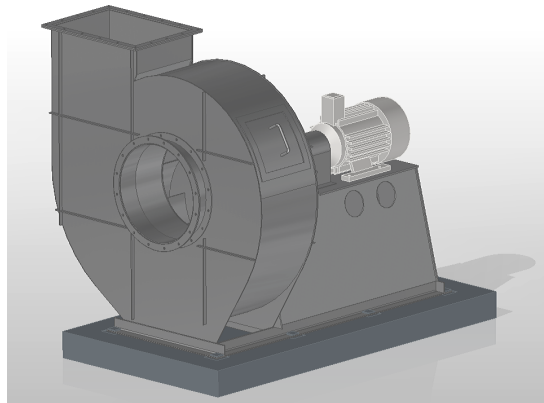
AIROCHEM.CO.IN

AEBC SERIES FANS

AEBC Series has an impeller with 6 to 12 spiral blades curved backward. It is designed for handling clean air or air with very little dust.

USES

ID, FD and SA for boilers
ID fan for Bag Filter
Ventilation
Heating
Cooling
Drying
Pneumatic Transport



SALIENT FEATURES

AEBC is efficient thanks to its streamlined inlet flare which prevents air turbulence at the fan intake and to the shape of its blades which ensures a smooth outflow of the air.

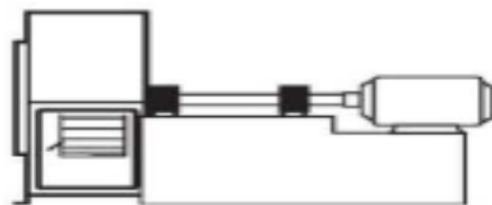
With its roughly 80 types each arrangement, it can answer all your needs in direct coupling at 1480 RPM and 2900 RPM.

AEBC fans generate lower noise owing to its higher efficiency.

ARRANGEMENT / SPEED AVAILABILITY

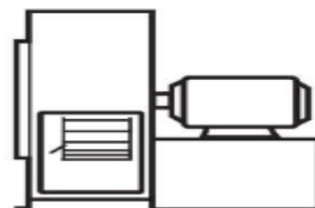
AMCA Arrangement 8 SWSI - 1480 RPM

Direct connection.
Impeller overhung,
Two bearings on base.
Extended base for prime mover



AMCA Arrangement 4 SWSI - 1480 RPM and 2900 RPM

For direct drive.
Impeller overhung on motor shaft.
No bearings on fan.
Motor mounted on base.



INSTRUCTIONS FOR USE

Use these instruction to select a fan matching your requirement and duty conditions

REQUIRED INPUTS

- Volume flow rate (m³/hr)
- Static pressure (mmWc)
- Density (kg/m³) OR Temperature (°C) and Site Altitude (meters above mean sea level)

STEPS

Example:

Select a blower for 10000 m³/hr at 300 mmWc at 100°C and at 500 meters elevation.

STEP 1: From table below, the conversion factor for 100 °C and 500 meters altitude is 1.35

NOTE: If density is known (in place of temperature and altitude), the conversion factor can be determined by dividing 1.2 by density at duty conditions. e.g. $1.2 / 0.79 = 1.35$, where 0.79 kg/m³ is density at duty condition.

STEP 2: The corrected static pressure is $300 \text{ mmWc} \times 1.35 = 405 \text{ mmWc}$ at standard conditions.

STEP 3: Selecting fan using fan performance graph, for 10000 m³/hr and 405 mmWc, gives model number "A38".

STEP 4: From TECHNICAL DATA tables, for "A38", Power is 16.388 kW, Motor is 22 kW and Minimum Motor is 15 kW.

The above Power is the maximum power consumption in the operating range at standard conditions (20 °C and 0 m altitude). Motor is derived considering 15% margin over maximum power consumption. Minimum motor is the lowest size motor permitted considering fan GD2 and motor starting time constraints.

For cold start at 20 °C, select 22 kW motor.

For hot start condition, the corrected power consumption is $16.388 / 1.35 = 12.139 \text{ kW}$.
Adding 15% margin, motor rated power should be greater than or equal to $12.139 \times 1.15 = 13.960 \text{ kW}$.
Next standard motor is 15 kW. Ensure that this is motor is greater than or equal to Minimum Motor kW.

STEP 5: From DIMENSIONS table, the inlet diameter D for "A38" is 475 mm.

From ACCESSORIES tables select required accessories matching dimension D (475 mm).



TEMPERATURE AND ALTITUDE CONVERSION FACTORS

Use these factor to convert duty condition to standard conditions for fan selection

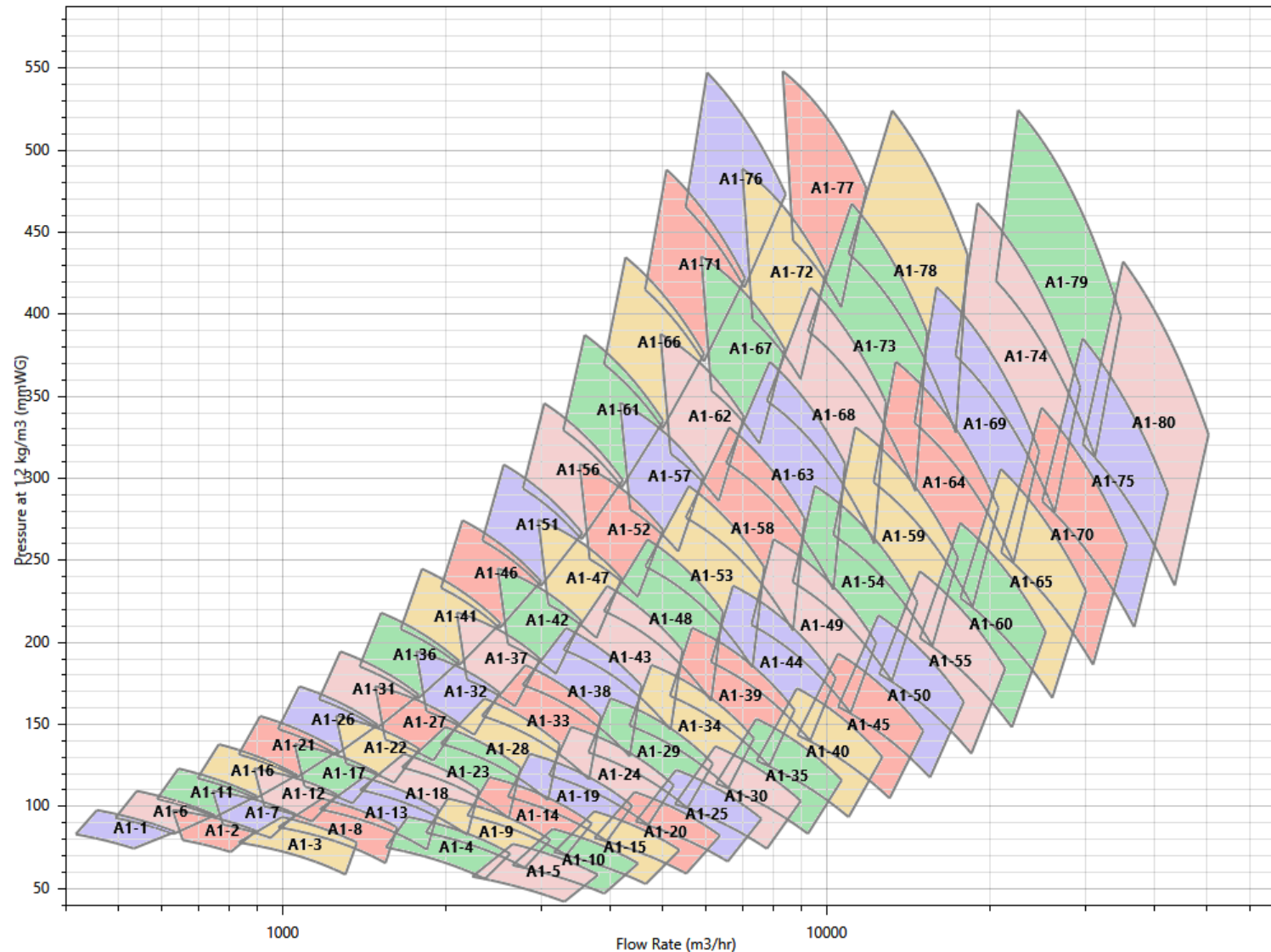
		Altitude above sea level (meters)																				
		0	100	200	300	400	500	600	700	800	900	1000	1100	1200	1300	1400	1500	1600	1700	1800	1900	2000
Temperature (°C)	-30	0.83	0.84	0.85	0.86	0.87	0.88	0.89	0.90	0.91	0.92	0.94	0.95	0.96	0.97	0.98	0.99	1.01	1.02	1.03	1.04	1.06
	-20	0.86	0.87	0.88	0.90	0.91	0.92	0.93	0.94	0.95	0.96	0.97	0.99	1.00	1.01	1.02	1.04	1.05	1.06	1.07	1.09	1.10
	-10	0.90	0.91	0.92	0.93	0.94	0.95	0.96	0.98	0.99	1.00	1.01	1.02	1.04	1.05	1.06	1.08	1.09	1.10	1.12	1.13	1.14
	0	0.93	0.94	0.95	0.97	0.98	0.99	1.00	1.01	1.02	1.04	1.05	1.06	1.08	1.09	1.10	1.12	1.13	1.14	1.16	1.17	1.19
	10	0.97	0.98	0.99	1.00	1.01	1.03	1.04	1.05	1.06	1.08	1.09	1.10	1.12	1.13	1.14	1.16	1.17	1.19	1.20	1.22	1.23
	20	1.00	1.01	1.02	1.04	1.05	1.06	1.07	1.09	1.10	1.11	1.13	1.14	1.16	1.17	1.18	1.20	1.21	1.23	1.24	1.26	1.28
	30	1.03	1.05	1.06	1.07	1.08	1.10	1.11	1.12	1.14	1.15	1.17	1.18	1.19	1.21	1.22	1.24	1.26	1.27	1.29	1.30	1.32
	40	1.07	1.08	1.09	1.11	1.12	1.13	1.15	1.16	1.17	1.19	1.20	1.22	1.23	1.25	1.26	1.28	1.30	1.31	1.33	1.34	1.36
	50	1.10	1.12	1.13	1.14	1.16	1.17	1.19	1.20	1.21	1.23	1.24	1.26	1.27	1.29	1.31	1.32	1.34	1.35	1.37	1.39	1.41
	60	1.14	1.15	1.16	1.18	1.19	1.21	1.22	1.24	1.25	1.27	1.28	1.30	1.31	1.33	1.35	1.36	1.38	1.40	1.41	1.43	1.45
	70	1.17	1.18	1.20	1.21	1.23	1.24	1.26	1.27	1.29	1.30	1.32	1.34	1.35	1.37	1.39	1.40	1.42	1.44	1.46	1.47	1.49
	80	1.20	1.22	1.23	1.25	1.26	1.28	1.30	1.31	1.33	1.34	1.36	1.37	1.39	1.41	1.43	1.44	1.46	1.48	1.50	1.52	1.54
	90	1.24	1.25	1.27	1.28	1.30	1.32	1.33	1.35	1.36	1.38	1.40	1.41	1.43	1.45	1.47	1.49	1.50	1.52	1.54	1.56	1.58
	100	1.27	1.29	1.30	1.32	1.33	1.35	1.37	1.38	1.40	1.42	1.44	1.45	1.47	1.49	1.51	1.53	1.55	1.56	1.58	1.60	1.62
	110	1.31	1.32	1.34	1.36	1.37	1.39	1.41	1.42	1.44	1.46	1.47	1.49	1.51	1.53	1.55	1.57	1.59	1.60	1.63	1.64	1.67
	120	1.34	1.36	1.37	1.39	1.41	1.42	1.44	1.46	1.48	1.49	1.51	1.53	1.55	1.57	1.59	1.61	1.63	1.65	1.67	1.69	1.71
	130	1.38	1.39	1.41	1.43	1.44	1.46	1.48	1.50	1.51	1.53	1.55	1.57	1.59	1.61	1.63	1.65	1.67	1.69	1.71	1.73	1.75
	140	1.41	1.43	1.44	1.46	1.48	1.50	1.52	1.53	1.55	1.57	1.59	1.61	1.63	1.65	1.67	1.69	1.71	1.73	1.75	1.77	1.80
	150	1.44	1.46	1.48	1.50	1.51	1.53	1.55	1.57	1.59	1.61	1.63	1.65	1.67	1.69	1.71	1.73	1.75	1.77	1.80	1.82	1.84
	160	1.48	1.50	1.51	1.53	1.55	1.57	1.59	1.61	1.63	1.65	1.67	1.69	1.71	1.73	1.75	1.77	1.79	1.81	1.84	1.86	1.88
	170	1.51	1.53	1.55	1.57	1.58	1.60	1.63	1.64	1.66	1.68	1.70	1.73	1.75	1.77	1.79	1.81	1.84	1.86	1.88	1.90	1.93
	180	1.55	1.56	1.58	1.60	1.62	1.64	1.66	1.68	1.70	1.72	1.74	1.76	1.79	1.81	1.83	1.85	1.88	1.90	1.92	1.95	1.97
	190	1.58	1.60	1.62	1.64	1.66	1.68	1.70	1.72	1.74	1.76	1.78	1.80	1.83	1.85	1.87	1.89	1.92	1.94	1.97	1.99	2.02
	200	1.61	1.63	1.65	1.67	1.69	1.71	1.74	1.76	1.78	1.80	1.82	1.84	1.86	1.89	1.91	1.94	1.96	1.98	2.01	2.03	2.06
	210	1.65	1.67	1.69	1.71	1.73	1.75	1.77	1.79	1.81	1.84	1.86	1.88	1.90	1.93	1.95	1.98	2.00	2.02	2.05	2.07	2.10
	220	1.68	1.70	1.72	1.74	1.76	1.79	1.81	1.83	1.85	1.88	1.90	1.92	1.94	1.97	1.99	2.02	2.04	2.07	2.09	2.12	2.15
230	1.72	1.74	1.76	1.78	1.80	1.82	1.85	1.87	1.89	1.91	1.94	1.96	1.98	2.01	2.03	2.06	2.08	2.11	2.14	2.16	2.19	
240	1.75	1.77	1.79	1.82	1.84	1.86	1.88	1.90	1.93	1.95	1.97	2.00	2.02	2.05	2.07	2.10	2.13	2.15	2.18	2.20	2.23	
250	1.78	1.81	1.83	1.85	1.87	1.89	1.92	1.94	1.96	1.99	2.01	2.04	2.06	2.09	2.11	2.14	2.17	2.19	2.22	2.25	2.28	

DRAFT COPY FOR PRIVATE CIRCULATION ONLY (Issued to: StratGem Projects)



SELECTION (1480 RPM, ARRANGEMENT 4)

User performance chart to select fan suitable for duty conditions

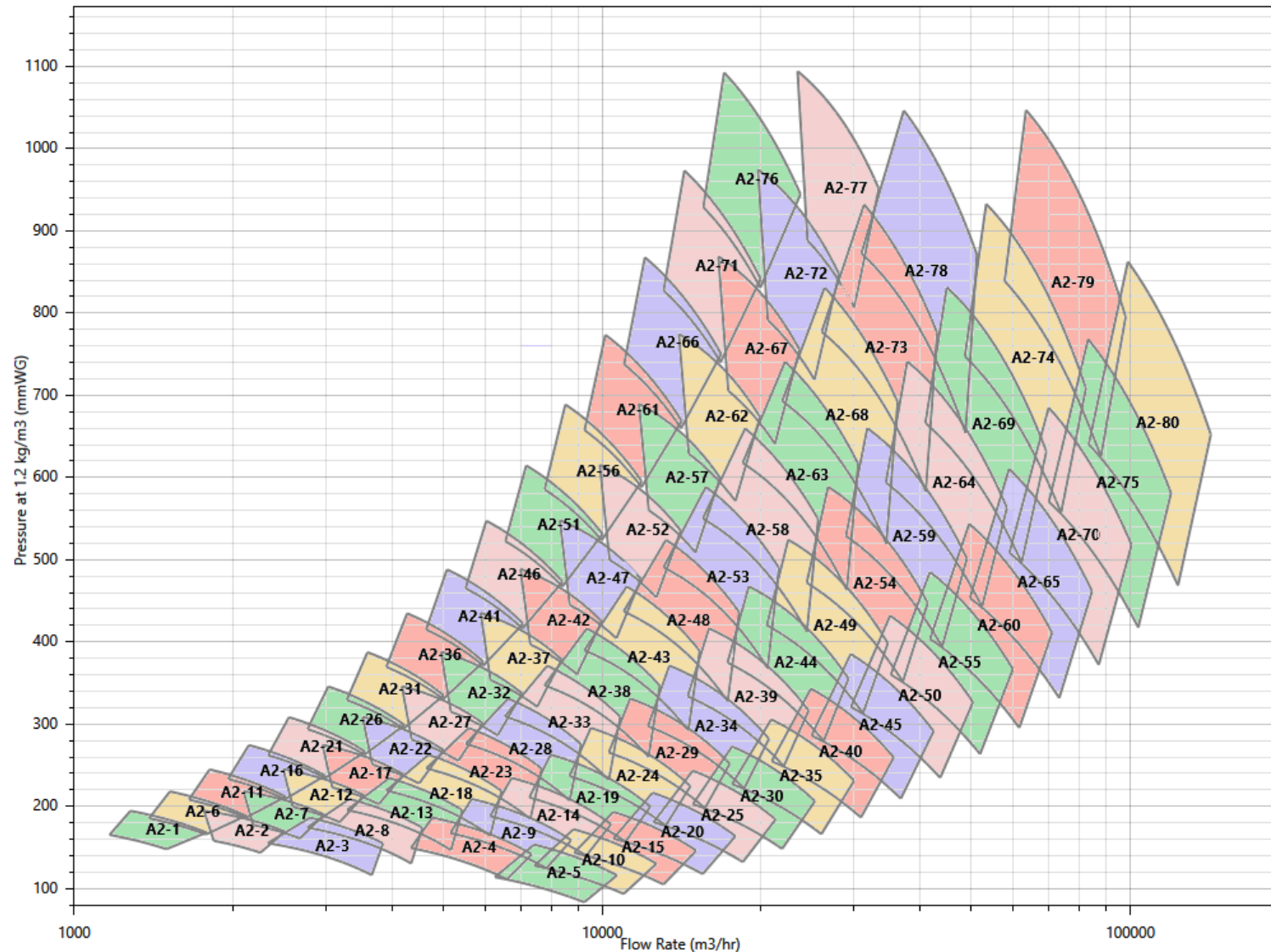


DRAFT COPY FOR PRIVATE CIRCULATION ONLY (Issued to: StratGem Projects)



SELECTION (1480 RPM, ARRANGEMENT 8)

User performance chart to select fan suitable for duty conditions

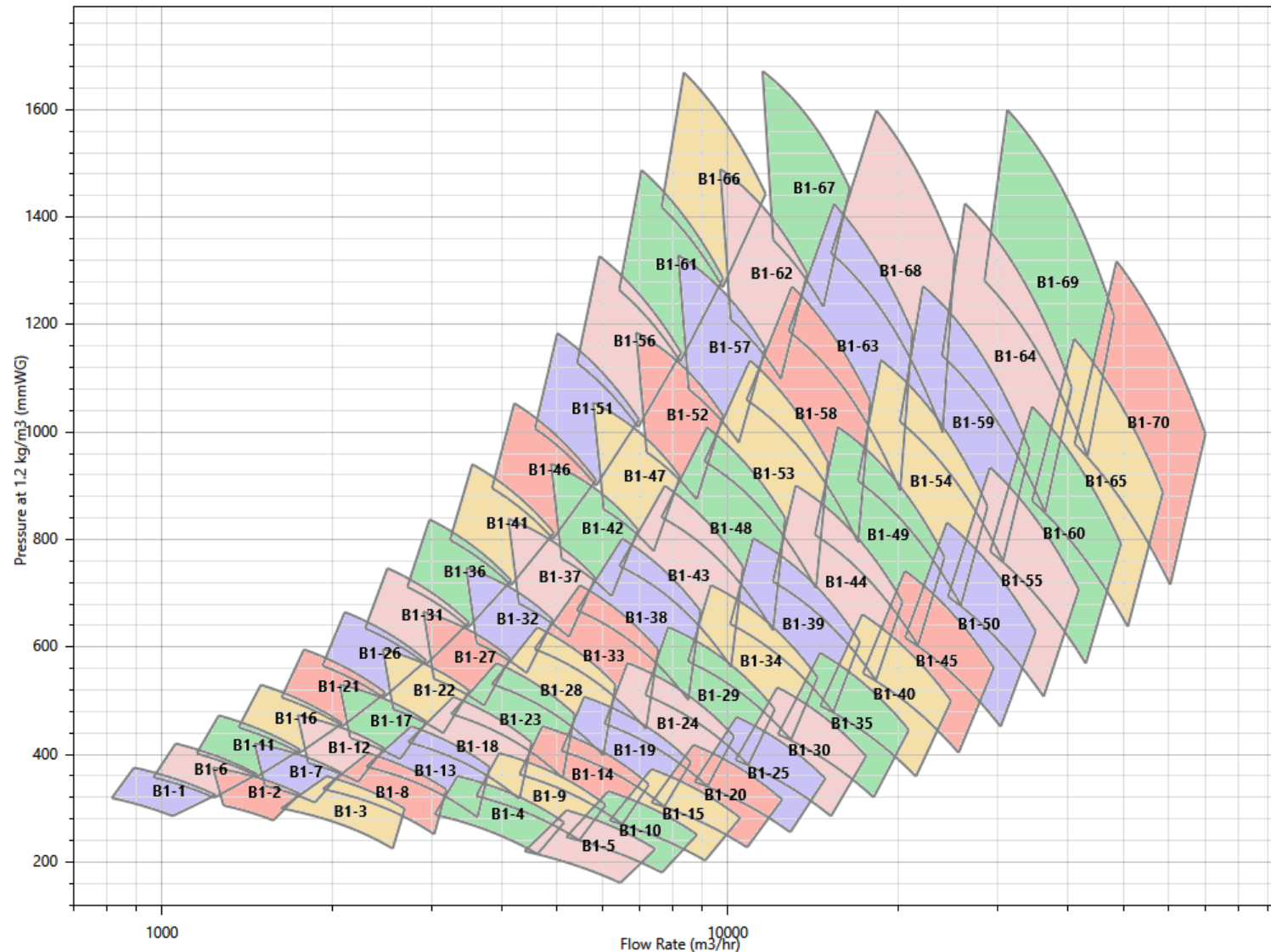


DRAFT COPY FOR PRIVATE CIRCULATION ONLY (Issued to: StratGem Projects)



SELECTION (2900 RPM, ARRANGEMENT 4)

User performance chart to select fan suitable for duty conditions



DRAFT COPY FOR PRIVATE CIRCULATION ONLY (Issued to: StratGem Projects)



TECHNICAL DATA (1480 RPM, ARRANGEMENT 4)

Driven with a 4 pole motor with impeller mounted on motor shaft

Fan	Impeller Thickness mm	Casing Thickness mm	GD2 kg-m2	Torque N-m	Power kW	Motor kW	Minimum Motor kW	Static Load kg	Dynamic Load kg
A1-1	5/3/3	3	2.250	1.266	0.196	1.5	1.5	133	200
A1-2	5/3/3	3	2.320	1.915	0.297	1.5	1.5	137	205
A1-3	5/3/3	3	2.400	2.538	0.393	1.5	1.5	141	212
A1-4	5/3/3	3	2.430	4.222	0.654	1.5	1.5	147	221
A1-5	5/3/3	3	2.380	4.844	0.751	1.5	1.5	153	229
A1-6	5/3/3	3	2.860	1.678	0.260	2.2	2.2	160	240
A1-7	5/3/3	3	2.950	2.539	0.393	2.2	2.2	164	246
A1-8	5/3/3	3	3.050	3.365	0.522	2.2	2.2	169	253
A1-9	5/3/3	3	3.090	5.597	0.867	2.2	2.2	174	262
A1-10	5/3/3	3	3.030	6.423	0.995	2.2	2.2	182	273
A1-11	5/3/3	3	3.620	2.251	0.349	2.2	2.2	171	256
A1-12	5/3/3	3	3.730	3.402	0.527	2.2	2.2	175	263
A1-13	5/3/3	3	3.840	4.510	0.699	2.2	2.2	181	271
A1-14	5/3/3	3	3.920	7.502	1.163	2.2	2.2	187	281
A1-15	5/3/3	3	3.830	8.609	1.334	2.2	2.2	194	292
A1-16	5/3/3	3	4.550	2.992	0.464	3.7	3.7	193	289
A1-17	5/3/3	3	4.710	4.523	0.701	3.7	3.7	198	297
A1-18	5/3/3	3	4.850	5.997	0.929	3.7	3.7	204	306
A1-19	5/3/3	3	4.940	9.974	1.546	3.7	3.7	211	316
A1-20	5/3/3	3	4.830	11.445	1.774	3.7	3.7	218	326
A1-21	5/3/3	3	5.750	4.008	0.621	3.7	3.7	206	310
A1-22	5/3/3	3	5.950	6.061	0.939	3.7	3.7	212	318
A1-23	5/3/3	3	6.120	8.035	1.245	3.7	3.7	219	328
A1-24	5/3/3	3	6.240	13.364	2.071	3.7	3.7	226	339
A1-25	5/3/3	3	6.110	15.335	2.377	3.7	3.7	233	350
A1-26	5/3/3	3	7.270	5.285	0.819	5.5	5.5	251	377
A1-27	5/3/3	3	7.520	7.991	1.239	5.5	5.5	257	385

DRAFT COPY FOR PRIVATE CIRCULATION ONLY (Issued to: StratGem Projects)



TECHNICAL DATA (1480 RPM, ARRANGEMENT 4)

Driven with a 4 pole motor with impeller mounted on motor shaft

Fan	Impeller Thickness mm	Casing Thickness mm	GD2 kg-m2	Torque N-m	Power kW	Motor kW	Minimum Motor kW	Static Load kg	Dynamic Load kg
A1-28	5/3/3	3	7.740	10.593	1.642	5.5	5.5	264	396
A1-29	5/3/3	3	7.870	17.619	2.731	5.5	5.5	273	409
A1-30	5/3/3	3	7.720	20.218	3.133	5.5	5.5	280	420
A1-31	5/3/3	3	9.170	7.059	1.094	5.5	5.5	275	412
A1-32	5/3/3	3	9.470	10.672	1.654	5.5	5.5	281	422
A1-33	5/3/3	3	9.770	14.149	2.193	5.5	5.5	289	434
A1-34	5/3/3	3	9.940	23.534	3.647	5.5	5.5	298	448
A1-35	5/3/3	3	9.690	27.004	4.185	5.5	5.5	307	460
A1-36	6/4/4	4	14.480	9.401	1.457	7.5	7.5	337	505
A1-37	6/4/4	4	14.980	14.216	2.203	7.5	7.5	346	518
A1-38	6/4/4	4	15.480	18.844	2.921	7.5	7.5	356	534
A1-39	6/4/4	4	15.770	31.343	4.858	7.5	7.5	368	551
A1-40	6/4/4	4	15.340	35.965	5.574	7.5	7.5	380	570
A1-41	6/4/4	4	18.300	12.557	1.946	7.5	7.5	380	570
A1-42	6/4/4	4	18.940	18.985	2.942	7.5	7.5	390	585
A1-43	6/4/4	4	19.560	25.169	3.901	7.5	7.5	401	601
A1-44	6/4/4	4	19.950	41.862	6.488	7.5	7.5	413	620
A1-45	6/4/4	4	19.390	43.553	7.445	9.3	7.5	489	733
A1-46	6/4/4	4	23.180	16.701	2.588	9.3	9.3	476	714
A1-47	6/4/4	4	24.000	25.250	3.913	9.3	9.3	486	729
A1-48	6/4/4	4	24.780	33.473	5.188	9.3	9.3	499	748
A1-49	6/4/4	4	25.200	54.005	8.628	11	9.3	531	797
A1-50	6/4/4	4	24.510	54.005	9.901	15	9.3	561	842
A1-51	6/4/4	4	29.200	22.356	3.465	11	11	534	801
A1-52	6/4/4	4	30.180	33.797	5.238	11	11	545	818
A1-53	6/4/4	4	31.150	44.806	6.944	11	11	559	838
A1-54	6/4/4	4	31.680	63.877	11.549	15	11	589	884



DRAFT COPY FOR PRIVATE CIRCULATION ONLY (Issued to: StratGem Projects)

TECHNICAL DATA (1480 RPM, ARRANGEMENT 4)

Driven with a 4 pole motor with impeller mounted on motor shaft

Fan	Impeller Thickness mm	Casing Thickness mm	GD2 kg-m2	Torque N-m	Power kW	Motor kW	Minimum Motor kW	Static Load kg	Dynamic Load kg
A1-55	6/4/4	4	31.090	63.877	13.252	18.5	11	623	935
A1-56	6/4/4	4	36.930	29.750	4.611	11	11	576	864
A1-57	6/4/4	4	38.090	44.981	6.971	11	11	588	882
A1-58	6/4/4	4	39.430	59.627	9.241	11	11	603	904
A1-59	6/4/4	4	40.040	63.877	15.370	18.5	11	651	977
A1-60	6/4/4	4	39.310	63.877	17.637	22	11	681	1021
A1-61	6/4/4	4	46.180	39.556	6.131	15	15	670	1004
A1-62	6/4/4	4	47.690	59.805	9.269	15	15	683	1025
A1-63	6/4/4	4	49.270	79.284	12.288	15	15	698	1047
A1-64	6/4/4	4	50.110	87.105	20.437	30	15	812	1218
A1-65	6/4/4	4	49.170	63.877	23.451	30	11	833	1249
A1-66	6/4/4	4	58.650	52.758	8.177	15	15	730	1095
A1-67	6/4/4	4	60.590	79.765	12.362	15	15	745	1118
A1-68	6/4/4	4	62.350	87.105	16.388	22	15	789	1184
A1-69	6/4/4	4	63.620	87.105	27.257	37	15	965	1448
A1-70	6/4/4	4	62.490	87.105	31.276	37	15	989	1484
A1-71	6/4/4	4	73.560	70.480	10.923	18.5	18.5	802	1203
A1-72	6/4/4	4	76.140	106.559	16.515	22	18.5	828	1242
A1-73	6/4/4	4	78.570	107.430	21.894	30	18.5	914	1372
A1-74	6/4/4	4	80.150	107.430	36.413	45	18.5	1057	1586
A1-75	6/4/4	4	77.960	107.430	41.782	55	18.5	1190	1786
A1-76	8/5/5	5	118.890	93.824	14.541	30	30	1035	1553
A1-77	8/5/5	5	122.920	141.848	21.984	30	30	1056	1583
A1-78	8/5/5	5	126.850	174.210	29.143	37	30	1171	1757
A1-79	8/5/5	5	128.980	174.210	48.470	75	30	1534	2301
A1-80	8/5/5	5	125.690	127.754	55.618	75	22	1568	2351

DRAFT COPY FOR PRIVATE CIRCULATION ONLY (Issued to: StratGem Projects)



TECHNICAL DATA (1480 RPM, ARRANGEMENT 8)

Driven with a 4 pole motor coupled to fan using flexible coupling

Fan	Impeller Thickness mm	Casing Thickness mm	GD2 kg-m2	Torque N-m	Power kW	Motor kW	Minimum Motor kW	Static Load kg	Dynamic Load kg
A2-1	5/3/3	3	8.750	7.059	1.094	5.5	5.5	372	559
A2-2	5/3/3	3	9.030	10.672	1.654	5.5	5.5	379	569
A2-3	5/3/3	3	9.380	14.150	2.193	5.5	5.5	389	584
A2-4	5/3/3	3	9.540	23.531	3.647	5.5	5.5	399	599
A2-5	5/3/3	3	9.300	27.003	4.185	5.5	5.5	408	612
A2-6	6/4/4	4	13.810	9.401	1.457	7.5	7.5	438	658
A2-7	6/4/4	4	14.290	14.214	2.203	7.5	7.5	448	672
A2-8	6/4/4	4	14.840	18.847	2.921	7.5	7.5	461	691
A2-9	6/4/4	4	15.120	31.345	4.858	7.5	7.5	473	709
A2-10	6/4/4	4	14.700	35.965	5.574	7.5	7.5	486	729
A2-11	6/4/4	4	17.460	12.556	1.946	7.5	7.5	576	864
A2-12	6/4/4	4	18.070	18.982	2.942	7.5	7.5	587	880
A2-13	6/4/4	4	18.730	25.170	3.901	7.5	7.5	600	900
A2-14	6/4/4	4	19.100	41.862	6.488	7.5	7.5	614	921
A2-15	6/4/4	4	18.540	48.037	7.445	9.3	7.5	628	942
A2-16	6/4/4	4	22.100	16.698	2.588	9.3	9.3	636	954
A2-17	6/4/4	4	22.890	25.248	3.913	9.3	9.3	647	970
A2-18	6/4/4	4	23.650	33.474	5.188	9.3	9.3	662	993
A2-19	6/4/4	4	24.050	55.670	8.628	11	9.3	690	1035
A2-20	6/4/4	4	23.390	63.884	9.901	15	9.3	721	1082
A2-21	6/4/4	4	27.860	22.357	3.465	11	11	696	1044
A2-22	6/4/4	4	28.790	33.797	5.238	11	11	708	1062
A2-23	6/4/4	4	29.760	44.804	6.944	11	11	724	1086
A2-24	6/4/4	4	30.230	74.517	11.549	15	11	756	1134
A2-25	6/4/4	4	29.670	85.505	13.252	18.5	11	792	1188
A2-26	6/4/4	4	35.230	29.751	4.611	11	11	762	1143

DRAFT COPY FOR PRIVATE CIRCULATION ONLY (Issued to: StratGem Projects)



TECHNICAL DATA (1480 RPM, ARRANGEMENT 8)

Driven with a 4 pole motor coupled to fan using flexible coupling

Fan	Impeller Thickness mm	Casing Thickness mm	GD2 kg-m2	Torque N-m	Power kW	Motor kW	Minimum Motor kW	Static Load kg	Dynamic Load kg
A2-27	6/4/4	4	36.350	44.978	6.971	11	11	775	1163
A2-28	6/4/4	4	37.550	59.625	9.241	11	11	792	1188
A2-29	6/4/4	4	38.160	99.171	15.370	18.5	11	836	1254
A2-30	6/4/4	4	37.460	113.798	17.637	22	11	867	1301
A2-31	6/4/4	4	44.070	39.559	6.131	11	11	892	1338
A2-32	6/4/4	4	45.510	59.806	9.269	15	15	907	1360
A2-33	6/4/4	4	46.990	79.285	12.288	15	15	942	1413
A2-34	6/4/4	4	47.770	131.864	20.437	30	15	1042	1563
A2-35	6/4/4	4	46.880	151.311	23.451	30	15	1082	1622
A2-36	6/4/4	4	55.970	52.760	8.177	15	15	983	1475
A2-37	6/4/4	4	57.820	79.762	12.362	15	15	1000	1501
A2-38	6/4/4	4	59.350	105.739	16.388	22	15	1099	1648
A2-39	6/4/4	4	60.530	175.868	27.257	37	15	1232	1848
A2-40	6/4/4	4	59.440	201.800	31.276	37	15	1269	1903
A2-41	6/4/4	4	70.200	70.478	10.923	18.5	18.5	1061	1592
A2-42	6/4/4	4	72.660	106.559	16.515	22	18.5	1095	1642
A2-43	6/4/4	4	74.880	141.265	21.894	30	18.5	1186	1779
A2-44	6/4/4	4	76.310	234.945	36.413	45	18.5	1349	2023
A2-45	6/4/4	4	74.210	269.587	41.782	55	18.5	1490	2235
A2-46	8/5/5	5	113.480	93.822	14.541	22	22	1319	1979
A2-47	8/5/5	5	117.330	141.846	21.984	30	30	1363	2045
A2-48	8/5/5	5	120.920	188.037	29.143	37	30	1507	2261
A2-49	8/5/5	5	122.840	312.739	48.470	75	30	1892	2838
A2-50	8/5/5	5	119.700	358.860	55.618	75	30	1972	2958
A2-51	8/5/5	5	142.580	125.373	19.431	30	30	1603	2405
A2-52	8/5/5	5	147.480	189.541	29.376	37	30	1671	2506

DRAFT COPY FOR PRIVATE CIRCULATION ONLY (Issued to: StratGem Projects)



TECHNICAL DATA (1480 RPM, ARRANGEMENT 8)

Driven with a 4 pole motor coupled to fan using flexible coupling

Fan	Impeller Thickness mm	Casing Thickness mm	GD2 kg-m2	Torque N-m	Power kW	Motor kW	Minimum Motor kW	Static Load kg	Dynamic Load kg
A2-53	8/5/5	5	152.090	251.269	38.943	45	30	1843	2765
A2-54	8/5/5	5	154.250	417.904	64.769	75	30	2220	3331
A2-55	8/5/5	5	150.260	479.530	74.320	90	30	2261	3392
A2-56	8/5/5	5	180.670	166.706	25.837	37	37	1774	2661
A2-57	8/5/5	5	186.390	252.030	39.061	45	37	1944	2916
A2-58	8/5/5	5	191.850	334.109	51.782	75	37	2250	3375
A2-59	8/5/5	5	194.610	555.679	86.122	110	37	2647	3970
A2-60	8/5/5	5	191.440	637.622	98.822	132	37	2795	4193
A2-61	8/5/5	5	227.120	222.847	34.538	45	37	2260	3390
A2-62	8/5/5	5	233.660	336.903	52.215	75	45	2363	3544
A2-63	8/5/5	5	241.320	446.623	69.220	90	45	2762	4143
A2-64	8/5/5	5	244.690	742.806	115.124	160	45	3090	4635
A2-65	8/5/5	5	241.090	852.339	132.100	160	45	3145	4718
A2-66	8/5/5	5	287.840	297.015	46.033	55	55	2620	3930
A2-67	8/5/5	5	297.020	449.043	69.595	90	55	2949	4424
A2-68	8/5/5	5	305.690	595.283	92.260	110	55	3096	4644
A2-69	8/5/5	5	311.030	990.049	153.443	187	55	3370	5055
A2-70	8/5/5	5	303.030	1136.044	176.070	250	55	4059	6089
A2-71	8/5/5	5	360.160	395.773	61.339	75	55	3081	4622
A2-72	8/5/5	5	371.820	598.360	92.737	110	75	3225	4837
A2-73	8/5/5	5	382.500	793.211	122.936	160	75	3495	5242
A2-74	8/5/5	5	388.180	1319.242	204.463	250	75	4191	6286
A2-75	8/5/5	5	379.320	1513.776	234.613	315	75	4506	6759
A2-76	8/5/5	5	457.540	528.328	81.883	110	75	3531	5296
A2-77	8/5/5	5	471.850	798.753	123.795	160	75	3665	5498
A2-78	8/5/5	5	484.780	1058.862	164.108	200	75	4361	6542

DRAFT COPY FOR PRIVATE CIRCULATION ONLY (Issued to: StratGem Projects)



TECHNICAL DATA (2900 RPM, ARRANGEMENT 4)

Driven with a 2 pole motor with impeller directly mounted on motor shaft.

Fan	Impeller Thickness mm	Casing Thickness mm	GD2 kg-m2	Torque N-m	Power kW	Motor kW	Minimum Motor kW	Static Load kg	Dynamic Load kg
B1-1	5/3/3	3	2.150	4.864	1.477	5.5	5.5	175	262
B1-2	5/3/3	3	2.220	7.353	2.233	5.5	5.5	178	267
B1-3	5/3/3	3	2.290	9.747	2.960	5.5	5.5	183	274
B1-4	5/3/3	3	2.320	16.211	4.923	7.5	5.5	198	298
B1-5	5/3/3	3	2.270	18.601	5.649	7.5	5.5	204	306
B1-6	5/3/3	3	2.730	6.447	1.958	5.5	5.5	197	296
B1-7	5/3/3	3	2.820	9.747	2.960	5.5	5.5	201	302
B1-8	5/3/3	3	2.910	12.921	3.924	5.5	5.5	206	309
B1-9	5/3/3	3	2.960	21.493	6.527	9.3	5.5	222	333
B1-10	5/3/3	3	2.890	24.660	7.489	9.3	5.5	229	344
B1-11	5/3/3	3	3.460	8.637	2.623	5.5	5.5	208	312
B1-12	5/3/3	3	3.570	13.063	3.967	7.5	7.5	213	319
B1-13	5/3/3	3	3.670	17.317	5.259	7.5	7.5	218	328
B1-14	5/3/3	3	3.750	28.806	8.748	11	7.5	285	427
B1-15	5/3/3	3	3.670	33.054	10.038	15	7.5	302	453
B1-16	5/3/3	3	4.350	11.489	3.489	7.5	7.5	241	362
B1-17	5/3/3	3	4.500	17.367	5.274	7.5	7.5	246	370
B1-18	5/3/3	3	4.640	23.027	6.993	9.3	7.5	305	458
B1-19	5/3/3	3	4.720	38.296	11.630	15	7.5	322	483
B1-20	5/3/3	3	4.620	43.943	13.345	18.5	7.5	343	515
B1-21	5/3/3	3	5.490	15.391	4.674	9.3	9.3	256	384
B1-22	5/3/3	3	5.690	23.271	7.067	9.3	9.3	315	472
B1-23	5/3/3	3	5.850	30.854	9.370	11	9.3	332	497
B1-24	5/3/3	3	5.960	51.313	15.583	18.5	9.3	354	531
B1-25	5/3/3	3	5.840	58.880	17.881	22	9.3	386	579
B1-26	5/3/3	3	6.950	20.294	6.163	9.3	9.3	329	493

DRAFT COPY FOR PRIVATE CIRCULATION ONLY (Issued to: StratGem Projects)



TECHNICAL DATA (2900 RPM, ARRANGEMENT 4)

Driven with a 2 pole motor with impeller directly mounted on motor shaft.

Fan	Impeller Thickness mm	Casing Thickness mm	GD2 kg-m2	Torque N-m	Power kW	Motor kW	Minimum Motor kW	Static Load kg	Dynamic Load kg
B1-27	5/3/3	3	7.190	30.680	9.317	11	9.3	344	516
B1-28	5/3/3	3	7.400	40.677	12.353	15	9.3	366	549
B1-29	5/3/3	3	7.520	67.649	20.544	30	9.3	473	710
B1-30	5/3/3	3	7.380	77.626	23.574	30	9.3	480	720
B1-31	5/3/3	3	8.770	27.104	8.231	11	11	365	547
B1-32	5/3/3	3	9.050	40.980	12.445	15	11	386	580
B1-33	5/3/3	3	9.330	54.329	16.499	22	11	493	740
B1-34	5/3/3	3	9.500	90.356	27.440	37	11	523	784
B1-35	5/3/3	3	9.260	103.682	31.487	37	11	530	796
B1-36	6/4/4	4	13.830	36.100	10.963	15	15	478	717
B1-37	6/4/4	4	14.310	54.579	16.575	22	15	487	730
B1-38	6/4/4	4	14.780	72.354	21.973	30	15	572	858
B1-39	6/4/4	4	15.060	120.341	36.546	45	15	684	1025
B1-40	6/4/4	4	14.660	138.086	41.935	55	15	819	1228
B1-41	6/4/4	4	17.480	48.217	14.643	18.5	18.5	585	877
B1-42	6/4/4	4	18.090	72.897	22.138	30	18.5	594	891
B1-43	6/4/4	4	18.680	96.639	29.348	37	18.5	706	1059
B1-44	6/4/4	4	19.070	160.728	48.811	75	18.5	1024	1537
B1-45	6/4/4	4	18.520	184.430	56.009	75	18.5	1037	1555
B1-46	6/4/4	4	22.120	64.125	19.474	30	22	640	960
B1-47	6/4/4	4	22.910	96.952	29.443	37	22	731	1097
B1-48	6/4/4	4	23.680	128.520	39.030	45	22	869	1304
B1-49	6/4/4	4	24.080	213.753	64.914	75	22	1095	1642
B1-50	6/4/4	4	23.420	245.275	74.487	90	22	1109	1664
B1-51	6/4/4	4	27.880	85.835	26.067	30	22	789	1184
B1-52	6/4/4	4	28.830	129.768	39.409	55	22	930	1394

DRAFT COPY FOR PRIVATE CIRCULATION ONLY (Issued to: StratGem Projects)



TECHNICAL DATA (2900 RPM, ARRANGEMENT 4)

Driven with a 2 pole motor with impeller directly mounted on motor shaft.

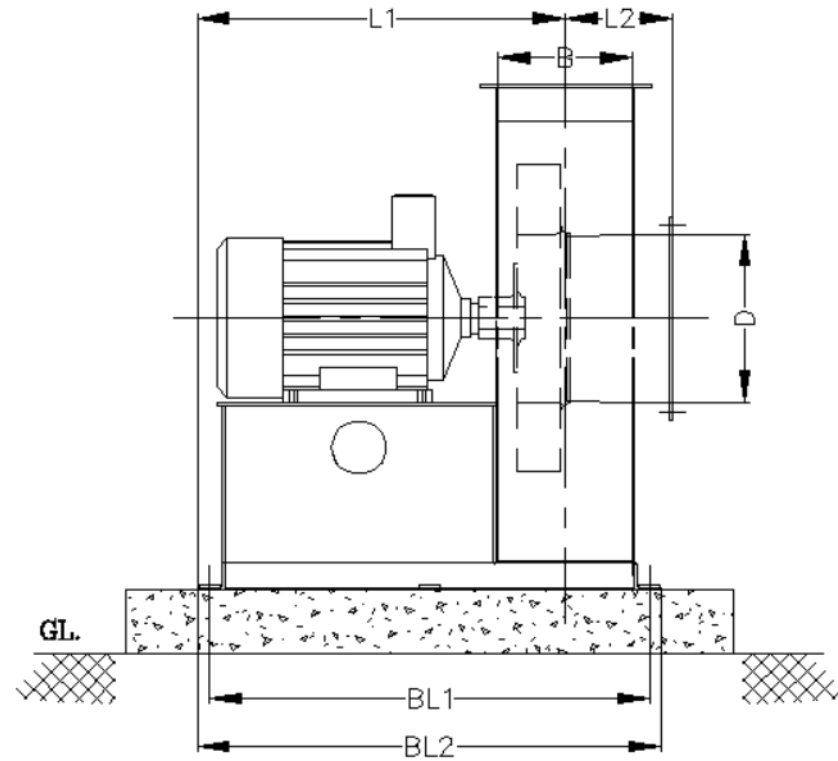
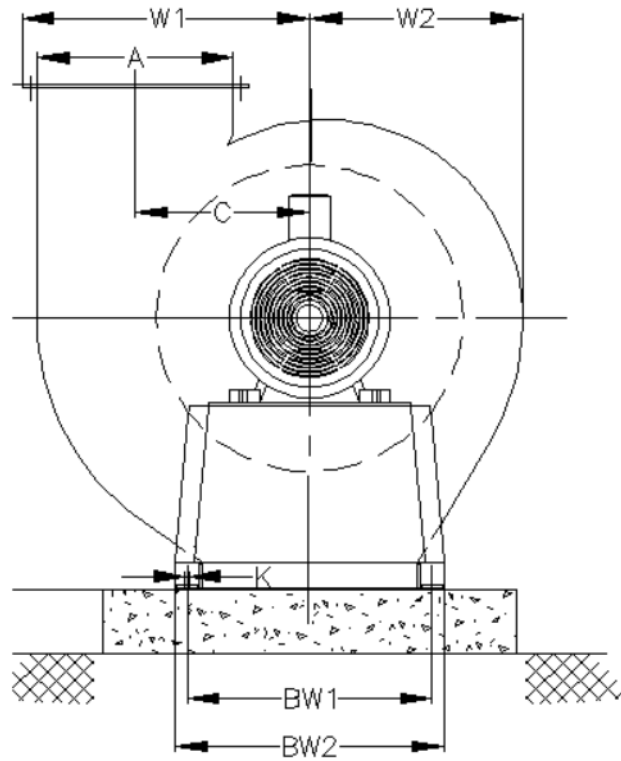
Fan	Impeller Thickness mm	Casing Thickness mm	GD2 kg-m2	Torque N-m	Power kW	Motor kW	Minimum Motor kW	Static Load kg	Dynamic Load kg
B1-53	6/4/4	4	29.760	172.029	52.243	75	22	1128	1692
B1-54	6/4/4	4	30.260	286.113	86.889	110	22	1429	2144
B1-55	6/4/4	4	29.700	328.305	99.702	132	22	1487	2230
B1-56	6/4/4	4	35.270	114.223	34.688	45	22	1153	1730
B1-57	6/4/4	4	36.380	172.701	52.447	75	22	1165	1748
B1-58	6/4/4	4	37.660	228.939	69.526	90	22	1467	2200
B1-59	6/4/4	4	38.240	380.763	115.633	160	22	1733	2600
B1-60	6/4/4	4	37.540	436.913	132.685	160	22	1752	2628
B1-61	6/4/4	4	44.100	151.887	46.126	55	30	1244	1866
B1-62	6/4/4	4	45.540	229.631	69.736	90	30	1516	2274
B1-63	6/4/4	4	47.050	304.415	92.447	110	30	1571	2357
B1-64	6/4/4	4	47.870	506.294	153.755	187	30	1787	2681
B1-65	6/4/4	4	46.960	580.953	176.428	250	30	2369	3553
B1-66	6/4/4	4	56.040	202.567	61.517	75	37	1573	2359
B1-67	6/4/4	4	57.890	306.266	93.009	110	37	1628	2442
B1-68	6/4/4	4	59.620	405.997	123.296	160	37	1840	2760

DRAFT COPY FOR PRIVATE CIRCULATION ONLY (Issued to: StratGem Projects)



DIMENSIONS (1480 RPM, ARRANGEMENT 4)

All dimensions are in mm.



DRAFT COPY FOR PRIVATE CIRCULATION ONLY (Issued to: StratGem Projects)



DIMENSIONS (1480 RPM, ARRANGEMENT 4)

All dimensions are in mm.

Fan	A	B	D	W1	W2	H1	H2	L1	L2	C	BW1	BW2	BL1	BL2
A1-1	320	119	150	495	356	464	394	381	150	294	416	460	446	490
A1-2	320	148	180	495	356	464	394	391	164	294	416	460	471	515
A1-3	320	185	224	495	356	464	394	404	182	294	416	460	502	546
A1-4	320	233	300	495	356	464	394	421	206	294	416	460	544	588
A1-5	320	290	355	495	356	464	394	442	235	294	416	460	593	637
A1-6	340	126	160	521	376	488	416	445	153	311	441	485	514	558
A1-7	340	156	190	521	376	488	416	456	168	311	441	485	540	584
A1-8	340	195	250	521	376	488	416	470	188	311	441	485	574	618
A1-9	340	246	315	521	376	488	416	488	213	311	441	485	617	661
A1-10	340	306	400	521	376	488	416	510	243	311	441	485	669	713
A1-11	361	133	160	551	399	514	442	448	157	329	461	505	520	564
A1-12	361	165	200	551	399	514	442	459	173	329	461	505	548	592
A1-13	361	206	265	551	399	514	442	474	193	329	461	505	583	627
A1-14	361	261	335	551	399	514	442	494	220	329	461	505	630	674
A1-15	361	324	400	551	399	514	442	517	252	329	461	505	685	729
A1-16	382	141	170	581	422	542	467	485	160	349	486	530	561	605
A1-17	382	174	212	581	422	542	467	497	177	349	486	530	590	634
A1-18	382	218	280	581	422	542	467	512	199	349	486	530	628	672
A1-19	382	276	355	581	422	542	467	533	228	349	486	530	677	721
A1-20	382	343	425	581	422	542	467	557	261	349	486	530	735	779
A1-21	406	149	180	614	448	571	496	487	164	370	511	555	568	612
A1-22	406	185	224	614	448	571	496	500	182	370	511	555	599	643
A1-23	406	231	300	614	448	571	496	517	206	370	511	555	639	683
A1-24	406	292	375	614	448	571	496	539	236	370	511	555	691	735
A1-25	406	363	450	614	448	571	496	565	272	370	511	555	752	796
A1-26	430	157	190	647	473	601	524	552	169	391	536	580	636	680
A1-27	430	195	236	647	473	601	524	565	187	391	536	580	669	713

DRAFT COPY FOR PRIVATE CIRCULATION ONLY (Issued to: StratGem Projects)



DIMENSIONS (1480 RPM, ARRANGEMENT 4)

All dimensions are in mm.

Fan	A	B	D	W1	W2	H1	H2	L1	L2	C	BW1	BW2	BL1	BL2
A1-28	430	244	300	647	473	601	524	583	212	391	536	580	711	755
A1-29	430	308	400	647	473	601	524	606	244	391	536	580	766	810
A1-30	430	384	475	647	473	601	524	633	282	391	536	580	831	875
A1-31	456	166	200	683	502	649	555	572	173	414	583	640	663	720
A1-32	456	206	250	683	502	649	555	586	193	414	583	640	697	754
A1-33	456	258	315	683	502	649	555	605	219	414	583	640	742	799
A1-34	456	326	400	683	502	649	555	629	253	414	583	640	800	857
A1-35	456	406	500	683	502	649	555	658	293	414	583	640	869	926
A1-36	481	177	212	720	531	683	588	576	204	438	613	670	672	729
A1-37	481	220	265	720	531	683	588	591	225	438	613	670	709	766
A1-38	481	275	335	720	531	683	588	611	252	438	613	670	756	813
A1-39	481	347	425	720	531	683	588	637	288	438	613	670	818	875
A1-40	481	432	530	720	531	683	588	667	331	438	613	670	891	948
A1-41	511	188	236	761	563	720	623	573	209	465	648	705	675	732
A1-42	511	232	300	761	563	720	623	590	231	465	648	705	714	771
A1-43	511	291	355	761	563	720	623	611	260	465	648	705	764	821
A1-44	511	367	450	761	563	720	623	638	299	465	648	705	830	887
A1-45	511	457	600	761	563	720	623	839	343	465	648	705	1076	1133
A1-46	542	198	250	804	596	758	659	743	214	492	678	735	850	907
A1-47	542	246	300	804	596	758	659	761	238	492	678	735	891	948
A1-48	542	307	375	804	596	758	659	783	269	492	678	735	944	1001
A1-49	542	388	500	804	596	758	659	812	309	492	678	735	1014	1071
A1-50	542	483	600	804	596	758	659	846	357	492	678	735	1096	1153
A1-51	575	209	265	860	632	800	699	748	220	521	718	775	860	917
A1-52	575	260	315	860	632	800	699	766	245	521	718	775	904	961
A1-53	575	325	400	860	632	800	699	789	278	521	718	775	960	1017
A1-54	575	411	530	860	632	800	699	820	320	521	718	775	1034	1091

DRAFT COPY FOR PRIVATE CIRCULATION ONLY (Issued to: StratGem Projects)



DIMENSIONS (1480 RPM, ARRANGEMENT 4)

All dimensions are in mm.

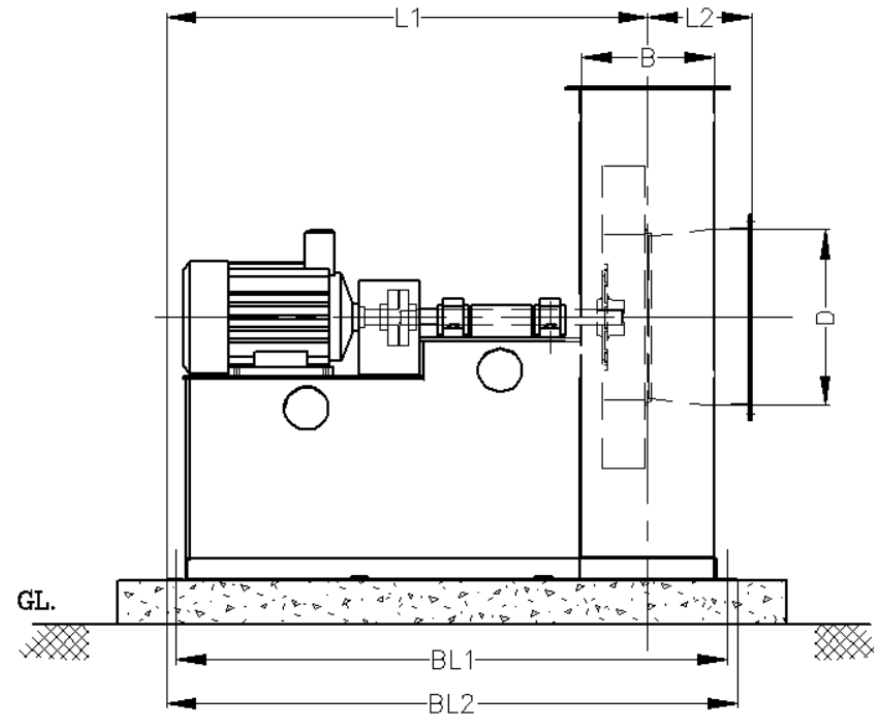
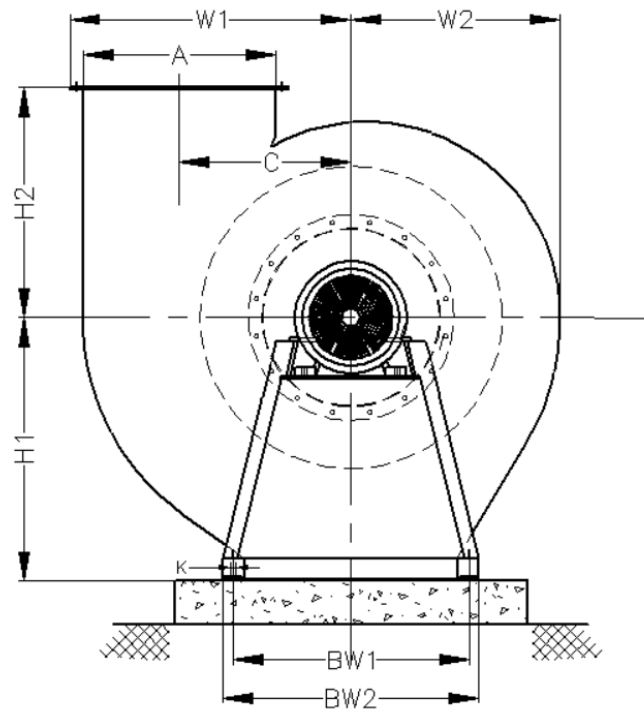
Fan	A	B	D	W1	W2	H1	H2	L1	L2	C	BW1	BW2	BL1	BL2
A1-55	575	512	630	860	632	800	699	886	371	521	718	775	1150	1207
A1-56	609	221	280	908	669	843	740	749	226	552	753	810	868	925
A1-57	609	275	335	908	669	843	740	768	252	552	753	810	914	971
A1-58	609	344	425	908	669	843	740	793	287	552	753	810	973	1030
A1-59	609	435	560	908	669	843	740	856	332	552	753	810	1081	1138
A1-60	609	541	670	908	669	843	740	894	386	552	753	810	1173	1230
A1-61	646	234	300	958	708	899	783	760	242	584	804	870	885	951
A1-62	646	290	355	958	708	899	783	780	270	584	804	870	934	1000
A1-63	646	364	450	958	708	899	783	806	307	584	804	870	997	1063
A1-64	646	460	600	958	708	899	783	921	355	584	804	870	1160	1226
A1-65	646	573	710	958	708	899	783	961	411	584	804	870	1257	1323
A1-66	685	247	300	1012	750	947	830	761	249	619	849	915	893	959
A1-67	685	307	375	1012	750	947	830	782	279	619	849	915	945	1011
A1-68	685	385	475	1012	750	947	830	840	317	619	849	915	1042	1108
A1-69	685	486	600	1012	750	947	830	1063	368	619	849	915	1315	1381
A1-70	685	606	750	1012	750	947	830	1106	428	619	849	915	1418	1484
A1-71	726	261	335	1070	795	999	879	798	256	656	894	960	938	1004
A1-72	726	325	400	1070	795	999	879	821	287	656	894	960	992	1058
A1-73	726	407	500	1070	795	999	879	900	329	656	894	960	1113	1179
A1-74	726	515	670	1070	795	999	879	1075	382	656	894	960	1342	1408
A1-75	726	642	800	1070	795	999	879	1207	446	656	894	960	1537	1603
A1-76	768	278	355	1129	841	1054	931	851	264	695	939	1005	999	1065
A1-77	768	346	425	1129	841	1054	931	875	298	695	939	1005	1057	1123
A1-78	768	433	530	1129	841	1054	931	1043	341	695	939	1005	1268	1334
A1-79	768	547	710	1129	841	1054	931	1277	398	695	939	1005	1559	1625
A1-80	768	681	850	1129	841	1054	931	1325	466	695	939	1005	1675	1741

DRAFT COPY FOR PRIVATE CIRCULATION ONLY (Issued to: StratGem Projects)



DIMENSIONS (1480 RPM, ARRANGEMENT 8)

All dimensions are in mm.



DRAFT COPY FOR PRIVATE CIRCULATION ONLY (Issued to: StratGem Projects)



DIMENSIONS (1480 RPM, ARRANGEMENT 8)

All dimensions are in mm.

Fan	A	B	D	W1	W2	H1	H2	L1	L2	C	BW1	BW2	BL1	BL2
A2-1	456	166	200	683	502	649	555	1145	173	414	583	640	1236	1293
A2-2	456	206	250	683	502	649	555	1165	193	414	583	640	1276	1333
A2-3	456	258	315	683	502	649	555	1193	219	414	583	640	1330	1387
A2-4	456	326	400	683	502	649	555	1227	253	414	583	640	1398	1455
A2-5	456	406	500	683	502	649	555	1267	293	414	583	640	1478	1535
A2-6	481	177	212	720	531	683	588	1151	204	438	613	670	1247	1304
A2-7	481	220	265	720	531	683	588	1172	225	438	613	670	1290	1347
A2-8	481	275	335	720	531	683	588	1201	252	438	613	670	1347	1404
A2-9	481	347	425	720	531	683	588	1237	288	438	613	670	1419	1476
A2-10	481	432	530	720	531	683	588	1280	331	438	613	670	1504	1561
A2-11	511	188	236	761	563	720	623	1363	209	465	648	705	1465	1522
A2-12	511	232	300	761	563	720	623	1385	231	465	648	705	1509	1566
A2-13	511	291	355	761	563	720	623	1416	260	465	648	705	1570	1627
A2-14	511	367	450	761	563	720	623	1455	299	465	648	705	1646	1703
A2-15	511	457	600	761	563	720	623	1499	343	465	648	705	1736	1793
A2-16	542	198	250	804	596	758	659	1368	214	492	678	735	1475	1532
A2-17	542	246	300	804	596	758	659	1392	238	492	678	735	1523	1580
A2-18	542	307	375	804	596	758	659	1425	269	492	678	735	1586	1643
A2-19	542	388	500	804	596	758	659	1500	309	492	678	735	1702	1759
A2-20	542	483	600	804	596	758	659	1548	357	492	678	735	1797	1854
A2-21	575	209	265	860	632	800	699	1409	220	521	718	775	1521	1578
A2-22	575	260	315	860	632	800	699	1434	245	521	718	775	1572	1629
A2-23	575	325	400	860	632	800	699	1469	278	521	718	775	1639	1696
A2-24	575	411	530	860	632	800	699	1511	320	521	718	775	1725	1782
A2-25	575	512	630	860	632	800	699	1592	371	521	718	775	1856	1913
A2-26	609	221	280	908	669	843	740	1415	226	552	753	810	1533	1590

DRAFT COPY FOR PRIVATE CIRCULATION ONLY (Issued to: StratGem Projects)



DIMENSIONS (1480 RPM, ARRANGEMENT 8)

All dimensions are in mm.

Fan	A	B	D	W1	W2	H1	H2	L1	L2	C	BW1	BW2	BL1	BL2
A2-27	609	275	335	908	669	843	740	1441	252	552	753	810	1587	1644
A2-28	609	344	425	908	669	843	740	1478	287	552	753	810	1658	1715
A2-29	609	435	560	908	669	843	740	1593	332	552	753	810	1819	1876
A2-30	609	541	670	908	669	843	740	1647	386	552	753	810	1925	1982
A2-31	646	234	300	958	708	899	783	1471	242	584	804	870	1597	1663
A2-32	646	290	355	958	708	899	783	1499	270	584	804	870	1653	1719
A2-33	646	364	450	958	708	899	783	1568	307	584	804	870	1759	1825
A2-34	646	460	600	958	708	899	783	1642	355	584	804	870	1881	1947
A2-35	646	573	710	958	708	899	783	1733	411	584	804	870	2029	2095
A2-36	685	247	300	1012	750	947	830	1508	249	619	849	915	1640	1706
A2-37	685	307	375	1012	750	947	830	1538	279	619	849	915	1700	1766
A2-38	685	385	475	1012	750	947	830	1604	317	619	849	915	1806	1872
A2-39	685	486	600	1012	750	947	830	1810	368	619	849	915	2062	2128
A2-40	685	606	750	1012	750	947	830	1905	428	619	849	915	2217	2283
A2-41	726	261	335	1070	795	999	879	1515	256	656	894	960	1654	1720
A2-42	726	325	400	1070	795	999	879	1581	287	656	894	960	1753	1819
A2-43	726	407	500	1070	795	999	879	1651	329	656	894	960	1863	1929
A2-44	726	515	670	1070	795	999	879	1859	382	656	894	960	2126	2192
A2-45	726	642	800	1070	795	999	879	1998	446	656	894	960	2328	2394
A2-46	768	278	355	1129	841	1054	931	1584	264	695	939	1005	1732	1798
A2-47	768	346	425	1129	841	1054	931	1669	298	695	939	1005	1851	1917
A2-48	768	433	530	1129	841	1054	931	1818	341	695	939	1005	2044	2110
A2-49	768	547	710	1129	841	1054	931	2128	398	695	939	1005	2411	2477
A2-50	768	681	850	1129	841	1054	931	2281	466	695	939	1005	2630	2696
A2-51	814	294	375	1194	892	1112	987	1712	272	736	989	1055	1868	1934
A2-52	814	366	450	1194	892	1112	987	1783	308	736	989	1055	1975	2041

DRAFT COPY FOR PRIVATE CIRCULATION ONLY (Issued to: StratGem Projects)



DIMENSIONS (1480 RPM, ARRANGEMENT 8)

All dimensions are in mm.

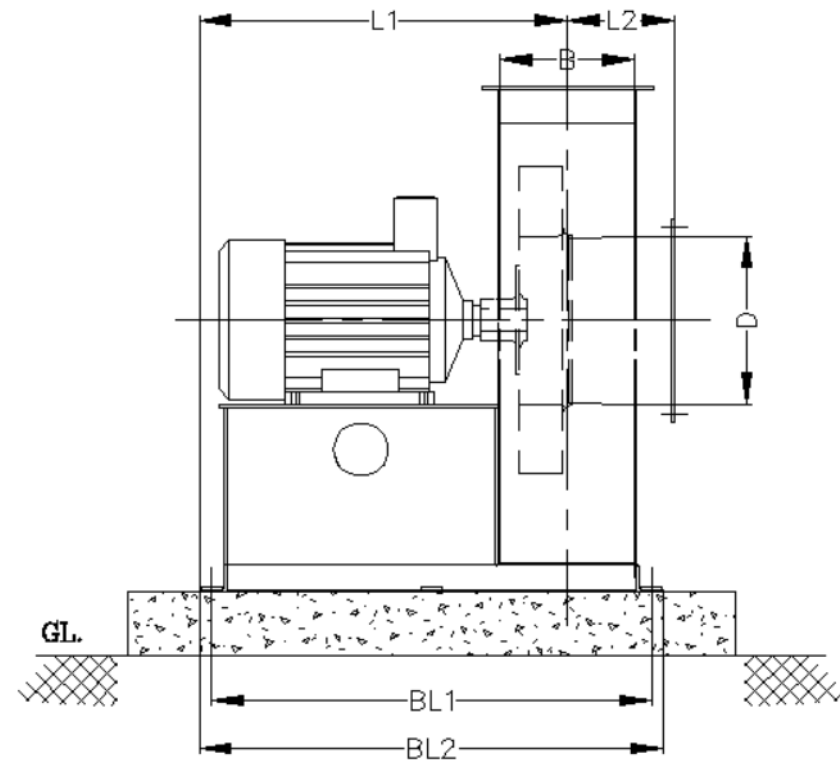
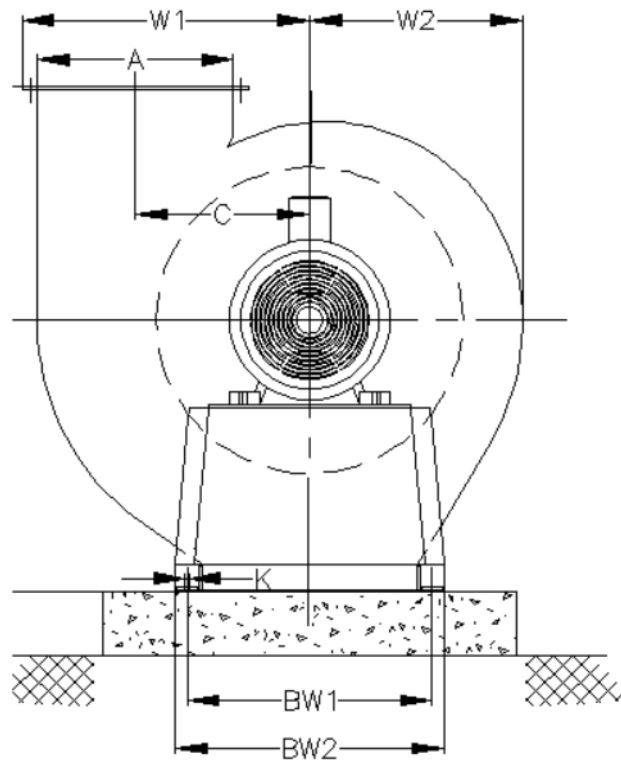
Fan	A	B	D	W1	W2	H1	H2	L1	L2	C	BW1	BW2	BL1	BL2
A2-53	814	458	560	1194	892	1112	987	1941	354	736	989	1055	2179	2245
A2-54	814	579	750	1194	892	1112	987	2229	414	736	989	1055	2528	2594
A2-55	814	721	900	1194	892	1112	987	2301	486	736	989	1055	2670	2736
A2-56	863	311	400	1262	944	1173	1044	1756	281	779	1044	1110	1920	1986
A2-57	863	386	475	1262	944	1173	1044	1903	318	779	1044	1110	2105	2171
A2-58	863	484	600	1262	944	1173	1044	2182	367	779	1044	1110	2433	2499
A2-59	863	612	800	1262	944	1173	1044	2451	431	779	1044	1110	2766	2832
A2-60	863	763	950	1262	944	1173	1044	2601	506	779	1044	1110	2992	3058
A2-61	915	329	400	1349	1000	1239	1107	1983	290	826	1104	1170	2156	2222
A2-62	915	409	500	1349	1000	1239	1107	2142	329	826	1104	1170	2356	2422
A2-63	915	513	630	1349	1000	1239	1107	2401	381	826	1104	1170	2667	2733
A2-64	915	648	800	1349	1000	1239	1107	2570	449	826	1104	1170	2903	2969
A2-65	915	808	1000	1349	1000	1239	1107	2650	529	826	1104	1170	3063	3129
A2-66	970	348	425	1426	1059	1307	1172	2110	324	875	1164	1230	2293	2359
A2-67	970	432	530	1426	1059	1307	1172	2357	366	875	1164	1230	2582	2648
A2-68	970	542	670	1426	1059	1307	1172	2489	421	875	1164	1230	2769	2835
A2-69	970	686	850	1426	1059	1307	1172	2587	493	875	1164	1230	2939	3005
A2-70	970	855	1060	1426	1059	1307	1172	3076	577	875	1164	1230	3513	3579
A2-71	1029	368	450	1507	1122	1380	1242	2325	334	926	1224	1290	2518	2584
A2-72	1029	457	560	1507	1122	1380	1242	2445	379	926	1224	1290	2682	2748
A2-73	1029	574	710	1507	1122	1380	1242	2531	437	926	1224	1290	2827	2893
A2-74	1029	726	900	1507	1122	1380	1242	3012	513	926	1224	1290	3384	3450
A2-75	1029	905	1120	1507	1122	1380	1242	3101	602	926	1224	1290	3563	3629
A2-76	1091	389	475	1593	1189	1458	1315	2362	345	981	1294	1360	2565	2631
A2-77	1091	484	600	1593	1189	1458	1315	2484	392	981	1294	1360	2735	2801
A2-78	1091	607	750	1593	1189	1458	1315	2953	454	981	1294	1360	3265	3331

DRAFT COPY FOR PRIVATE CIRCULATION ONLY (Issued to: StratGem Projects)



DIMENSIONS (2900 RPM, ARRANGEMENT 4)

All dimensions are in mm.



DRAFT COPY FOR PRIVATE CIRCULATION ONLY (Issued to: StratGem Projects)



DIMENSIONS (2900 RPM, ARRANGEMENT 4)

All dimensions are in mm.

Fan	A	B	D	W1	W2	H1	H2	L1	L2	C	BW1	BW2	BL1	BL2
B1-1	320	119	150	495	356	464	394	544	150	294	416	460	609	653
B1-2	320	148	180	495	356	464	394	554	164	294	416	460	634	678
B1-3	320	185	224	495	356	464	394	567	182	294	416	460	665	709
B1-4	320	233	300	495	356	464	394	584	206	294	416	460	707	751
B1-5	320	290	355	495	356	464	394	605	235	294	416	460	756	800
B1-6	340	126	160	521	376	488	416	544	153	311	441	485	613	657
B1-7	340	156	190	521	376	488	416	555	168	311	441	485	639	683
B1-8	340	195	250	521	376	488	416	569	188	311	441	485	673	717
B1-9	340	246	315	521	376	488	416	587	213	311	441	485	716	760
B1-10	340	306	400	521	376	488	416	609	243	311	441	485	768	812
B1-11	361	133	160	551	399	514	442	547	157	329	461	505	619	663
B1-12	361	165	200	551	399	514	442	558	173	329	461	505	647	691
B1-13	361	206	265	551	399	514	442	573	193	329	461	505	682	726
B1-14	361	261	335	551	399	514	442	762	220	329	461	505	898	942
B1-15	361	324	400	551	399	514	442	785	252	329	461	505	953	997
B1-16	382	141	170	581	422	542	467	545	160	349	486	530	621	665
B1-17	382	174	212	581	422	542	467	557	177	349	486	530	650	694
B1-18	382	218	280	581	422	542	467	741	199	349	486	530	857	901
B1-19	382	276	355	581	422	542	467	762	228	349	486	530	906	950
B1-20	382	343	425	581	422	542	467	786	261	349	486	530	964	1008
B1-21	406	149	180	614	448	571	496	547	164	370	511	555	628	672
B1-22	406	185	224	614	448	571	496	729	182	370	511	555	828	872
B1-23	406	231	300	614	448	571	496	746	206	370	511	555	868	912
B1-24	406	292	375	614	448	571	496	768	236	370	511	555	920	964
B1-25	406	363	450	614	448	571	496	824	272	370	511	555	1011	1055
B1-26	430	157	190	647	473	601	524	717	169	391	536	580	801	845

DRAFT COPY FOR PRIVATE CIRCULATION ONLY (Issued to: StratGem Projects)



DIMENSIONS (2900 RPM, ARRANGEMENT 4)

All dimensions are in mm.

Fan	A	B	D	W1	W2	H1	H2	L1	L2	C	BW1	BW2	BL1	BL2
B1-27	430	195	236	647	473	601	524	730	187	391	536	580	834	878
B1-28	430	244	300	647	473	601	524	748	212	391	536	580	876	920
B1-29	430	308	400	647	473	601	524	851	244	391	536	580	1011	1055
B1-30	430	384	475	647	473	601	524	878	282	391	536	580	1076	1120
B1-31	456	166	200	683	502	649	555	737	173	414	583	640	828	885
B1-32	456	206	250	683	502	649	555	751	193	414	583	640	862	919
B1-33	456	258	315	683	502	649	555	850	219	414	583	640	987	1044
B1-34	456	326	400	683	502	649	555	874	253	414	583	640	1045	1102
B1-35	456	406	500	683	502	649	555	903	293	414	583	640	1114	1171
B1-36	481	177	212	720	531	683	588	767	204	438	613	670	863	920
B1-37	481	220	265	720	531	683	588	782	225	438	613	670	900	957
B1-38	481	275	335	720	531	683	588	852	252	438	613	670	997	1054
B1-39	481	347	425	720	531	683	588	984	288	438	613	670	1165	1222
B1-40	481	432	530	720	531	683	588	1130	331	438	613	670	1354	1411
B1-41	511	188	236	761	563	720	623	818	209	465	648	705	920	977
B1-42	511	232	300	761	563	720	623	835	231	465	648	705	959	1016
B1-43	511	291	355	761	563	720	623	962	260	465	648	705	1115	1172
B1-44	511	367	450	761	563	720	623	1212	299	465	648	705	1404	1461
B1-45	511	457	600	761	563	720	623	1244	343	465	648	705	1481	1538
B1-46	542	198	250	804	596	758	659	819	214	492	678	735	926	983
B1-47	542	246	300	804	596	758	659	943	238	492	678	735	1073	1130
B1-48	542	307	375	804	596	758	659	1081	269	492	678	735	1242	1299
B1-49	542	388	500	804	596	758	659	1217	309	492	678	735	1419	1476
B1-50	542	483	600	804	596	758	659	1251	357	492	678	735	1501	1558
B1-51	575	209	265	860	632	800	699	926	220	521	718	775	1038	1095
B1-52	575	260	315	860	632	800	699	1060	245	521	718	775	1198	1255

DRAFT COPY FOR PRIVATE CIRCULATION ONLY (Issued to: StratGem Projects)



DIMENSIONS (2900 RPM, ARRANGEMENT 4)

All dimensions are in mm.

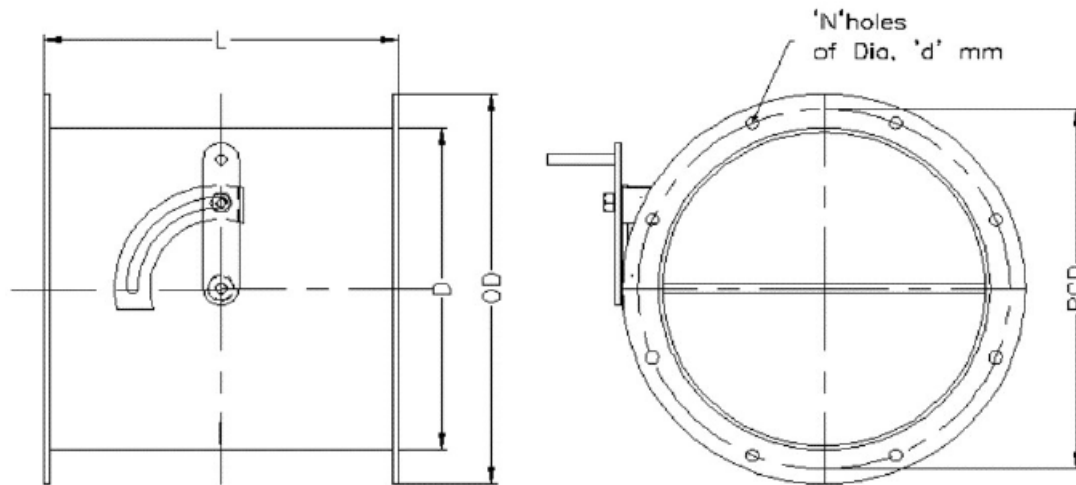
Fan	A	B	D	W1	W2	H1	H2	L1	L2	C	BW1	BW2	BL1	BL2
B1-53	575	325	400	860	632	800	699	1190	278	521	718	775	1361	1418
B1-54	575	411	530	860	632	800	699	1364	320	521	718	775	1578	1635
B1-55	575	512	630	860	632	800	699	1400	371	521	718	775	1664	1721
B1-56	609	221	280	908	669	843	740	1150	226	552	753	810	1269	1326
B1-57	609	275	335	908	669	843	740	1169	252	552	753	810	1315	1372
B1-58	609	344	425	908	669	843	740	1337	287	552	753	810	1517	1574
B1-59	609	435	560	908	669	843	740	1370	332	552	753	810	1595	1652
B1-60	609	541	670	908	669	843	740	1408	386	552	753	810	1687	1744
B1-61	646	234	300	958	708	899	783	1165	242	584	804	870	1290	1356
B1-62	646	290	355	958	708	899	783	1328	270	584	804	870	1482	1548
B1-63	646	364	450	958	708	899	783	1354	307	584	804	870	1545	1611
B1-64	646	460	600	958	708	899	783	1423	355	584	804	870	1662	1728
B1-65	646	573	710	958	708	899	783	1612	411	584	804	870	1908	1974
B1-66	685	247	300	1012	750	947	830	1309	249	619	849	915	1441	1507
B1-67	685	307	375	1012	750	947	830	1330	279	619	849	915	1493	1559
B1-68	685	385	475	1012	750	947	830	1392	317	619	849	915	1594	1660

DRAFT COPY FOR PRIVATE CIRCULATION ONLY (Issued to: StratGem Projects)



ACCESSORIES - BUTTERFLY DAMPERS

All dimensions are in mm.



NOTES:

1. OD, PCD, N will be constructed to match fan flange.
2. Dampers are available in 3 mm, 4 mm and 5 mm thickness

Designation	D	L
DBF-150x200	150	200
DBF-160x200	160	200
DBF-170x200	170	200
DBF-180x200	180	200
DBF-190x250	190	250
DBF-200x250	200	250
DBF-212x250	212	250
DBF-224x250	224	250
DBF-236x250	236	250
DBF-250x300	250	300
DBF-265x300	265	300
DBF-280x300	280	300
DBF-300x350	300	350
DBF-315x350	315	350

Designation	D	L
DBF-335x350	335	350
DBF-355x400	355	400
DBF-375x400	375	400
DBF-400x450	400	450
DBF-425x450	425	450
DBF-450x500	450	500
DBF-475x500	475	500
DBF-500x550	500	550
DBF-530x550	530	550
DBF-560x600	560	600
DBF-600x650	600	650
DBF-630x650	630	650
DBF-670x700	670	700
DBF-710x750	710	750

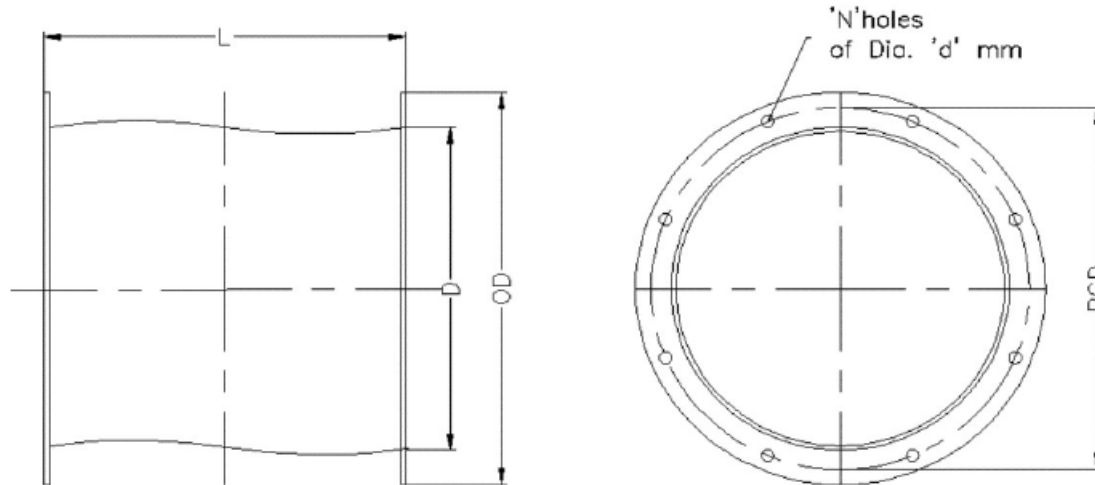
Designation	D	L
DBF-750x800	750	800
DBF-800x850	800	850
DBF-850x900	850	900
DBF-900x950	900	950
DBF-950x1000	950	1000
DBF-1000x1050	1000	1050
DBF-1060x1100	1060	1100
DBF-1120x1150	1120	1150
DBF-1180x1200	1180	1200
DBF-1250x1300	1250	1300
DBF-1320x1350	1320	1350
DBF-1400x1450	1400	1450
DBF-1500x1550	1500	1550

DRAFT COPY FOR PRIVATE CIRCULATION ONLY (Issued to: StratGem Projects)



ACCESSORIES - FLEXIBLE CONNECTIONS

All dimensions are in mm.



NOTES:

1. OD, PCD, N will be constructed to match fan flange.

2. Available materials:

Material	Temp (°C)
Canvas	< 60
Rubberised Canvas	< 110
EPDM	< 130
Ceramic Fiber	< 500

Designation	D	L
DBF-150x200	150	200
DBF-160x200	160	200
DBF-170x200	170	200
DBF-180x200	180	200
DBF-190x250	190	250
DBF-200x250	200	250
DBF-212x250	212	250
DBF-224x250	224	250
DBF-236x250	236	250
DBF-250x300	250	300
DBF-265x300	265	300
DBF-280x300	280	300
DBF-300x350	300	350
DBF-315x350	315	350

Designation	D	L
DBF-335x350	335	350
DBF-355x400	355	400
DBF-375x400	375	400
DBF-400x450	400	450
DBF-425x450	425	450
DBF-450x500	450	500
DBF-475x500	475	500
DBF-500x550	500	550
DBF-530x550	530	550
DBF-560x600	560	600
DBF-600x650	600	650
DBF-630x650	630	650
DBF-670x700	670	700
DBF-710x750	710	750

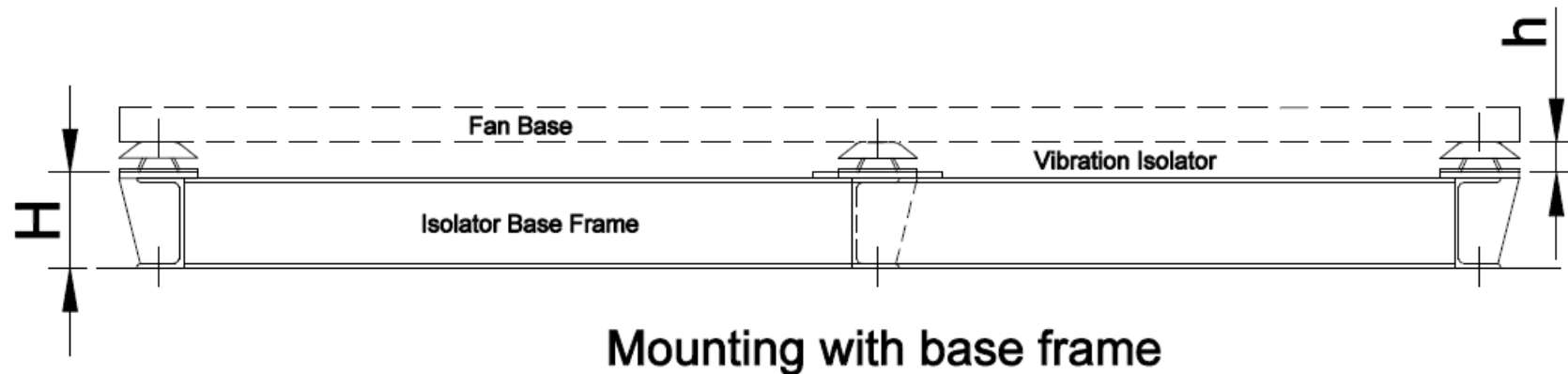
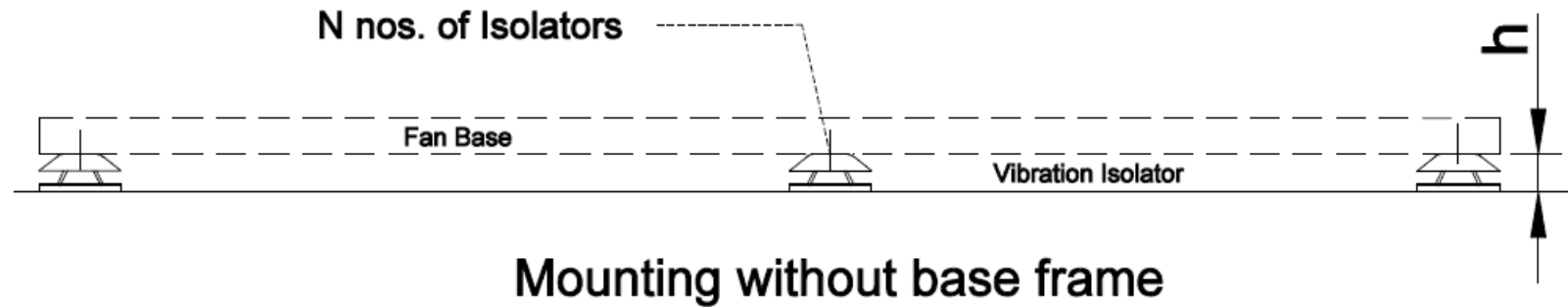
Designation	D	L
DBF-750x800	750	800
DBF-800x850	800	850
DBF-850x900	850	900
DBF-900x950	900	950
DBF-950x1000	950	1000
DBF-1000x1050	1000	1050
DBF-1060x1100	1060	1100
DBF-1120x1150	1120	1150
DBF-1180x1200	1180	1200
DBF-1250x1300	1250	1300
DBF-1320x1350	1320	1350
DBF-1400x1450	1400	1450
DBF-1500x1550	1500	1550

DRAFT COPY FOR PRIVATE CIRCULATION ONLY (Issued to: StratGem Projects)



ACCESSORIES - VIBRATION ISOLATORS

All dimensions are in mm.



DRAFT COPY FOR PRIVATE CIRCULATION ONLY (Issued to: StratGem Projects)



ACCESSORIES - VIBRATION ISOLATORS

All dimensions are in mm.

Fan	h	H	N
A1-1	35.5	100	4
A1-2	35.5	100	4
A1-3	35.5	100	4
A1-4	35.5	100	4
A1-5	35.5	100	4
A1-6	35.5	100	4
A1-7	35.5	100	4
A1-8	35.5	100	4
A1-9	35.5	100	4
A1-10	35.5	100	4
A1-11	35.5	100	4
A1-12	35.5	100	4
A1-13	35.5	100	4
A1-14	35.5	100	4
A1-15	35.5	100	4
A1-16	35.5	100	4
A1-17	35.5	100	4
A1-18	35.5	100	4
A1-19	35.5	100	4
A1-20	35.5	100	4
A1-21	35.5	100	4
A1-22	35.5	100	4
A1-23	35.5	100	4
A1-24	35.5	100	4
A1-25	35.5	100	4
A1-26	35.5	100	4
A1-27	35.5	100	4

Fan	h	H	N
A1-28	35.5	100	4
A1-29	35.5	100	4
A1-30	35.5	100	4
A1-31	35.5	125	4
A1-32	35.5	125	4
A1-33	35.5	125	4
A1-34	35.5	125	4
A1-35	35.5	125	4
A1-36	35.5	125	4
A1-37	35.5	125	4
A1-38	35.5	125	4
A1-39	35.5	125	4
A1-40	35.5	125	4
A1-41	35.5	125	4
A1-42	35.5	125	4
A1-43	35.5	125	4
A1-44	35.5	125	4
A1-45	35.5	125	6
A1-46	35.5	125	4
A1-47	35.5	125	4
A1-48	35.5	125	4
A1-49	35.5	125	6
A1-50	35.5	125	6
A1-51	35.5	125	4
A1-52	35.5	125	4
A1-53	35.5	125	4
A1-54	35.5	125	6

Fan	h	H	N
A1-55	35.5	125	6
A1-56	35.5	125	4
A1-57	35.5	125	4
A1-58	35.5	125	4
A1-59	35.5	125	6
A1-60	35.5	125	6
A1-61	35.5	150	4
A1-62	35.5	150	4
A1-63	35.5	150	4
A1-64	35.5	150	6
A1-65	35.5	150	6
A1-66	35.5	150	4
A1-67	35.5	150	4
A1-68	35.5	150	6
A1-69	35.5	150	6
A1-70	35.5	150	6
A1-71	35.5	150	4
A1-72	35.5	150	4
A1-73	35.5	150	6
A1-74	35.5	150	6
A1-75	35.5	150	8
A1-76	35.5	150	4
A1-77	35.5	150	6
A1-78	35.5	150	6
A1-79	35.5	150	8
A1-80	35.5	150	8

DRAFT COPY FOR PRIVATE CIRCULATION ONLY (Issued to: StratGem Projects)



ACCESSORIES - VIBRATION ISOLATORS

All dimensions are in mm.

Fan	h	H	N
A2-1	35.5	125	6
A2-2	35.5	125	6
A2-3	35.5	125	6
A2-4	35.5	125	6
A2-5	35.5	125	6
A2-6	35.5	125	6
A2-7	35.5	125	6
A2-8	35.5	125	6
A2-9	35.5	125	6
A2-10	35.5	125	8
A2-11	35.5	125	6
A2-12	35.5	125	8
A2-13	35.5	125	8
A2-14	35.5	125	8
A2-15	35.5	125	8
A2-16	35.5	125	6
A2-17	35.5	125	8
A2-18	35.5	125	8
A2-19	35.5	125	8
A2-20	35.5	125	8
A2-21	35.5	125	8
A2-22	35.5	125	8
A2-23	35.5	125	8
A2-24	35.5	125	8
A2-25	35.5	125	8
A2-26	35.5	125	8

Fan	h	H	N
A2-27	35.5	125	8
A2-28	35.5	125	8
A2-29	35.5	125	8
A2-30	35.5	125	8
A2-31	35.5	150	8
A2-32	35.5	150	8
A2-33	35.5	150	8
A2-34	35.5	150	8
A2-35	35.5	150	10
A2-36	35.5	150	8
A2-37	35.5	150	8
A2-38	35.5	150	8
A2-39	35.5	150	10
A2-40	35.5	150	10
A2-41	35.5	150	8
A2-42	35.5	150	8
A2-43	35.5	150	8
A2-44	35.5	150	10
A2-45	35.5	150	10
A2-46	35.5	150	8
A2-47	35.5	150	8
A2-48	35.5	150	10
A2-49	35.5	150	10
A2-50	35.5	150	12
A2-51	35.5	150	8
A2-52	35.5	150	8

Fan	h	H	N
A2-53	35.5	150	10
A2-54	35.5	150	12
A2-55	35.5	150	12
A2-56	35.5	150	10
A2-57	35.5	150	12
A2-58	35.5	150	12
A2-59	35.5	150	14
A2-60	35.5	150	14
A2-61	35.5	150	12
A2-62	35.5	150	12
A2-63	35.5	150	14
A2-64	35.5	150	14
A2-65	35.5	150	16
A2-66	35.5	150	12
A2-67	35.5	150	14
A2-68	35.5	150	14
A2-69	35.5	150	14
A2-70	35.5	150	18
A2-71	35.5	150	14
A2-72	35.5	150	14
A2-73	35.5	150	14
A2-74	35.5	150	16
A2-75	35.5	150	18
A2-76	35.5	150	14
A2-77	35.5	150	14
A2-78	35.5	150	16

DRAFT COPY FOR PRIVATE CIRCULATION ONLY (Issued to: StratGem Projects)



ACCESSORIES - VIBRATION ISOLATORS

All dimensions are in mm.

Fan	h	H	N
B1-1	35.5	100	4
B1-2	35.5	100	4
B1-3	35.5	100	4
B1-4	35.5	100	4
B1-5	35.5	100	4
B1-6	35.5	100	4
B1-7	35.5	100	4
B1-8	35.5	100	4
B1-9	35.5	100	4
B1-10	35.5	100	4
B1-11	35.5	100	4
B1-12	35.5	100	4
B1-13	35.5	100	4
B1-14	35.5	100	4
B1-15	35.5	100	4
B1-16	35.5	100	4
B1-17	35.5	100	4
B1-18	35.5	100	4
B1-19	35.5	100	4
B1-20	35.5	100	4
B1-21	35.5	100	4
B1-22	35.5	100	4
B1-23	35.5	100	4
B1-24	35.5	100	4
B1-25	35.5	100	6
B1-26	35.5	100	4

Fan	h	H	N
B1-27	35.5	100	4
B1-28	35.5	100	4
B1-29	35.5	100	6
B1-30	35.5	100	6
B1-31	35.5	125	4
B1-32	35.5	125	4
B1-33	35.5	125	4
B1-34	35.5	125	6
B1-35	35.5	125	6
B1-36	35.5	125	4
B1-37	35.5	125	4
B1-38	35.5	125	4
B1-39	35.5	125	6
B1-40	35.5	125	6
B1-41	35.5	125	4
B1-42	35.5	125	4
B1-43	35.5	125	6
B1-44	35.5	125	6
B1-45	35.5	125	6
B1-46	35.5	125	4
B1-47	35.5	125	6
B1-48	35.5	125	6
B1-49	35.5	125	6
B1-50	35.5	125	8
B1-51	35.5	125	6
B1-52	35.5	125	6

Fan	h	H	N
B1-53	35.5	125	6
B1-54	35.5	125	8
B1-55	35.5	125	8
B1-56	35.5	125	6
B1-57	35.5	125	6
B1-58	35.5	125	8
B1-59	35.5	125	8
B1-60	35.5	125	8
B1-61	35.5	150	6
B1-62	35.5	150	6
B1-63	35.5	150	8
B1-64	35.5	150	8
B1-65	35.5	150	8
B1-66	35.5	150	6
B1-67	35.5	150	6
B1-68	35.5	150	8

DRAFT COPY FOR PRIVATE CIRCULATION ONLY (Issued to: StratGem Projects)



COMPANY

AIROCHEM is a leading manufacturer of industrial fans, air pollution control equipment, pneumatic conveying systems, ventilation systems, heating, cooling and drying systems.

The company started operations in 1975. Today with over 40 years of experience, AIROCHEM makes world class fans with up to 92% efficiency.



PRODUCTS

- Industrial Fans - All types of centrifugal and axial flow fans
- Air Pollution Control Equipment - Cyclones, Bag Filters, Scrubbers
- Systems - Dust extraction, fume extraction, dust suppression, air heating, cooling and drying, pneumatic conveying and ventilation,.
- Services - field balancing, shaft alignment, retrofitting

CONTACT

Head and Registered Office:

Plot No B-57
M.I.D.C., Shirol
Kolhapur, Maharashtra
INDIA - 416 112
Phone: +91 230 2668107,
Mobile: +91 98228 33300, +91 90110 68031

Branch Office:

79, Tataline
Near Akash deep Plaza, Golmuri
Jamshedpur, Jharkhand
INDIA - 831 003
Phone: + 91 657 2341086

